

TODAY'S PROGRAM, February 6

Cathy Foes has invited Jackie Diediker from Braveheart Advocacy Center to share about their services.

The meal option is soup/salad bar unless each Rotarian selects another choice on our webpage at www.princetonrotaryclub.com or sends an email to Rita at undergroundinn@gmail.com by **3:00 p.m. on Monday** with one of the following options:

- Meatloaf & Mashed Potatoes**
- Grilled Chicken Lettuce Salad**
- Turkey Wrap & Fries (or Chips)**
- Hamburger & Fries (or Chips)**
- Chicken Salad Sandwich & Fries (or Chips)**
- Deep-Fried Tenderloin & Fries (or Chips)**
- Chicken Strips & Fries (or Chips)**

All Rotarians choosing one of these options pay \$11 for the meal to Rotary who pays the Underground.

ATTENDANCE, Week of January 30

Membership: 43 Active Members
 7 Senior Active
 20 Corporate Auxiliary
 70 Total

Percentage: 63%

UPCOMING MEETINGS & EVENTS

- 2/10 - Join us for Blacklight Bingo at the Moose Lodge!
- 2/13 - We will have a little fun for Valentine's Day. Invite that special someone, and order from our regular menu items!
- 2/20 - Cathy Foes has Tina Curtis from the IL Small Business Development Center to talk about their program.
- 2/27 - No noon meeting. We will be announcing a service project with the Chamber of Commerce!

ABSENCES, January 30

Cain, Davis, Hirst, Horras, Kann, Keutzer, Lange, Monier, Mullane, Nichols, Noble, Orwig, Park, Schou, Taylor, Williams, Wittenauer, Zerneck

MAKE-UPS, January 30

Taylor, Zerneck

MAKE-UPS, Before January 30

None

HAPPY BIRTHDAY

2/7 - Bob Hayward

**January 30 Program
 Mike Vaughn, Photographer**

Rex Lasson introduced Mike Vaughn, a local photographer who is well-known to many. Mike spent 44 years working at LCN and has been retired for 10 years now. He has enjoyed photography for many years and takes thousands of pictures of nature, festivals and community functions, favorite places and landmarks, and sports. Mike shared a slideshow of some amazing photographs and answered questions throughout his presentation. A few are pictured here.

GUESTS, January 30

Mike Vaughn (Rex Lasson)

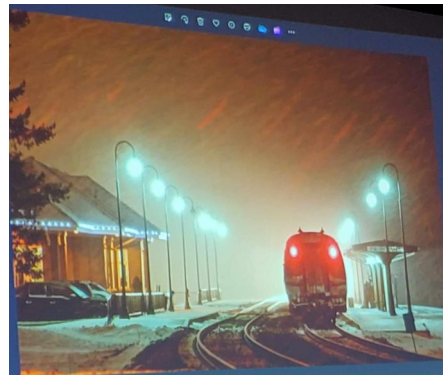
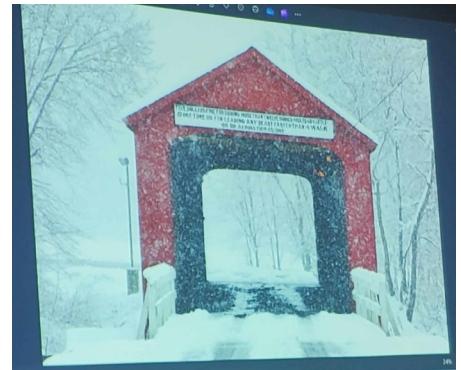
HAPPY ANNIVERSARY

2/9 - Michael & Elizabeth Klise Zerneck

MAKE-UP OPPORTUNITIES

within two weeks of missed meeting

- 1) Attend another Rotary Club's meeting. Go to my.rotary.org - click on *Club Finder*.
- 2) Read articles and/or watch videos at www.rotaryclubone.org for 30 minutes.
- 3) Give blood at a Blood Drive (schedule at www.bloodcenter.org with Impact Life):
 ♦ Second Monday each month, 12 p.m. to 5 p.m. at OSF St. Clare.
- 4) Corporate Auxiliary Members can attend as a make-up for the Primary Member.
- 5) Participate in service projects or attend committee meetings. ****Be sure to let Tracy Wright know for make-up purposes.****



Rotary Club of Princeton
 Princeton, IL 61356
www.princetonrotaryclub.com
*Like us on Facebook at
 Princeton Rotary Club*

**President
 Rotary International**
 Gordon McNally
 Rotary Club of South Queensferry, Scotland
www.Rotary.org

District 6420 Governor
 Dave Emerick
 East Moline/Silvis Rotary Club
demerick@choosethechief.com
www.Rotary6420.org

**Past District Governor
 (2022 - 2023)**
 Laura Kann

Asst. Governor
 Tracy Grimmer

CLUB OFFICERS & DIRECTORS July 2023 - June 2024

President	Joe Park
President-Elect	Eric May
Vice-President	Steve Bouslog
Secretary	Tracy Wright
Treasurer	Jeff Hunt
Director	Beth Peacock
Director	Michael Stutzke
Director	Wayne Peacock
Director	Cathy Foes



Orientation for new Rotarians is scheduled for Tuesday, February 13th at 11 a.m. Please contact Tracy Grimmer if you have not yet attended but plan to be there. Orientation will be held at the Underground.

COMMITTEE ASSIGNMENTS: July 1, 2023 - June 30, 2024

AUCTION

Eric May
Steve Bouslog
Julia Cain
Ginger Freeberg
Pam Pratt Marsh
Tucker Nichols
Roxana Noble
Ashley Oliver
Wayne Peacock
Tim Remy
Pat Schou

AUDIT

Dan Legner
Dave Horras
Jeff Martin

COMMUNITY SERVICE

Cathy Foes
Bonnie Anders
Bob Henkelman
Rex Lasson
Jeff Martin
Lynn Olds
Ashley Oliver
Andrew Whitlock
SUB-CABOOSE
Rex Lasson
Bob Hayward
Judd Lusher
Jeff Martin

CONNECTIONS

Tracy Grimmer
Bonnie Anders
Stephanie Gustafson
Tammy Lange
Pam Pratt Marsh
Roxana Noble
Ashley Oliver

FOUNDATION

Gary Bruce
Steve Bouslog
Michele Davis
Ian Legner
Michael Stutzke

FUNDRAISING

Joanne Sheldon
Jene Kinsley
Pam Pratt Marsh
Shannon Merkel
Lynn Olds
Michael Stutzke

GRANTS/SCHOLARSHIP

Ryan Keutzer
Jeff Dzik
Judd Lusher
Joanne Sheldon
Michael Stutzke

GREETERS

Beth Peacock
Mandi Johnson
Ryan Keutzer
Jene Kinsley
Dan Legner
Pam Pratt Marsh
Jeff Martin
Tucker Nichols
Wayne Peacock
Joanne Sheldon

INVOCATIONS

Chantha Chhim
Bob Henkelman

PIVOT

Tracy Wright
Chantha Chhim

PROGRAMS

Eric May

PUBLIC RELATIONS

Tracy Wright
Chantha Chhim
Bob Mullane

SERGEANT-AT-ARMS

Bob Mullane
Steve Bouslog
Jenica Cole
Tracy Grimmer
Pam Pratt Marsh
Eric May
Joe Park
Derek Whited

SHRIMPFEET

Michael Stutzke
Steve Bouslog
Tracy Grimmer
Stephanie Gustafson
Tom Kammerer
Ryan Keutzer
Pam Pratt Marsh
Eric May
Tucker Nichols
Wayne Peacock
Joanne Sheldon
Tracy Wright

SPECIAL LUNCHEAS

Pam Pratt Marsh
Michele Davis
Shannon Merkel
Joanne Sheldon

VOCATIONAL SERVICE

Gary Bruce
Bob Hayward

YOUTH PROGRAMS

Derek Fetzer
Mandi Johnson
Ian Legner
Eric May
Beth Peacock

***What are district and global grants?** The Rotary Foundation has spent more than \$3 billion on life-changing, sustainable projects around the world. Rotary members can work with communities through Foundation grants, and two key options are district and global grants. District grants fund small-scale, short-term activities that address needs in your community and communities abroad. Your district chooses what activities it will fund with these grants, such as humanitarian projects, scholarships, youth programs, or vocational training teams. Global grants fund large, international activities with sustainable and measurable results in Rotary's areas of focus. These can include humanitarian projects, scholarships for graduate-level study, or vocational training teams.*



ROTARY CLUB OF PRINCETON MEMBERSHIP

#R Anders, Bonnie	Freedom House	# Kann, Laura (3)	Retired Public Health	# Schou, Pat	ICAHN
#R Bouslog, Steve (4)	KB Elliott Fin. Advisors	# Kautz, Paul	Ret. Executive Director	R Sheldon, Joanne (4)	Success Realty
#*R Bruce, Gary (10)	Ret. Jeweler	Keutzer, Ryan	studioK Architecture	#*R Sorcic, Tony (16)	Ret. Banking
Burrows, Kyle	OSF St. Clare	Kinsley, Jene	Gateway Services	#R Stutzke, Michael	Ret. Education
#R Cain, Julia	Flowers by Julia	Lange, Tammy	Princeton Park District	Taylor, Dennis	Taylor's Way
Chhim, Chantha	Bunker Hill Church	Lasson, Rex	RE Investments	Taylor, Josh	Taylor's Way
Cole, Jenica	Princeton Chamber	# Legner, Dan	Compeer Financial	# Weborg, John	Ret. Pastor/Professor
Cook, Jackie	Liberty Village	Legner, Ian	KB Elliott Fin. Advisors	Whited, Derek	Taylor's Way
Davis, Michele	Culver's	#R Lusher, Judd (25)	Ret. School Administrator	Whitlock, Andrew	Assurance
Davis, Nick	Princeton Park District	Mabry, Ray	City of Princeton	Williams, Amanda	Liberty Village
Diaz, Jennifer	Liberty Village	Marsh, Pam Pratt (1)	Advertising	Wittenauer, Theresa	City of Princeton
# Dzik, Jeff	Optometrist (Wal-Mart)	#R Martin, Jeff (2)	Ret. Chiropractic	# Wright, Tracy (2)	Gateway Services
# Fetzer, Derek	Heartland Bank	# May, Eric	May, May, Angel & Harris	Yepsen, Victoria	City of Princeton
Fitzpatrick, Tonya	Freedom House	McNally, Ashlee	Liberty Village	Zerneck, Michael (3)	Freedom House
Foes, Catherine (2)	OSF HealthCare Foundation	Merkel, Shannon	Gateway Services		
Freeberg, Ginger	Heartland Bank	Monier, Shellee	Meadows Home Décor	# Paul Harris Fellow	
#* Grimmer, Tracy (2)	First State Bank	*R Mullane, Bob (2)	Starved Rock Media	+ Rotary Foundation Benefactor	
Gustafson, Stephanie	Taylor's Way	Munson, Chi	Aperion Care	* Past President	
Hartman, Scott	OSF St. Clare	Nichols, Tucker	Edward Jones	R Rotarian of the Year	
# Hayward, Bob (20)	Ret. U of I Extension	#*R Noble, Roxana (3)	Berkshire Hathaway Home	() Number indicates years of perfect attendance	
#*R Heiden, Nancy (4)	Retired Banking	Olds, Lynn	Greenfield Retirement Home		
Henkelman, Bob	People Church	Oliver, Ashley	Shaw Media		
Hirst, Melanie	Aperion Care	Orwig, J.D.	Princeton Elementary		
Horras, Dave	Ag View FS	# Park, Joe (1)	In Home Care Connection		
Hunt, Jeff (4)	Central Bank	# Peacock, Beth (3)	KBC Solutions, Inc.		
Jackson, Susan	Aperion Care	# Peacock, Wayne (2)	Key Builders Construction		
Johnson, Mandi	Gateway Services	Remy, Tim (2)	Heartland Bank		
Kammerer, Tom	City of Princeton	Rux, Samantha Harker	OSF St. Clare		

Paul Harris Fellows (non-members)

Carla Bouslog
Diane Bruce
Donna Sorcic
Wick Warren